

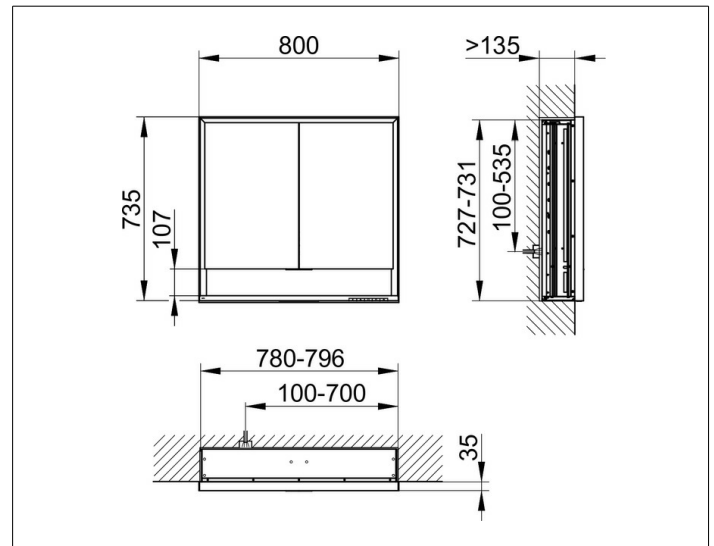
**Royal Lumos**

**14312171301 Mirror cabinet**

**PRODUCT**



**DRAWING**



**PRODUCT ATTRIBUTES**

for recessed installation,  
 adjustable light colour from 2700 kelvin (warm white)  
 to 6500 kelvin (daylight),  
 2 hinged double sided crystal mirrored doors,  
 Body: aluminium silver anodized  
 interior rear wall mirrored  
 Operation:  
 key panel with capacitive touch sensor,  
 integrated extension function for e.g. lighth switch  
 Illumination:  
 frame lighting and washbasin/shelf light separately,  
 infinitely dimmable and can be switched on/off  
 LED 56 watt (lifespan > 30.000 hours)  
 infinitely dimmable  
 EEK: C , 56 kWh/1000h

**EQUIPMENT**

- 2 sockets
- 2 x 2 adjustable glass shelves
- storage space across full width
- soft-closing doors

**SURFACE**

silver anodized

**DIMENSION**

800 x 735 x 165 mm